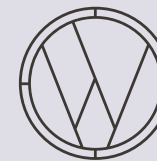


**WILLOWDALE ESTATE**

Bradley Palmer State Park  
24 Asbury Street  
Topsfield, MA 01983

[www.willowdaleestate.com](http://www.willowdaleestate.com)  
978.887.8211



**WILLOWDALE ESTATE**

TOPSFIELD, MASSACHUSETTS





Willowdale Estate, a Bramble Hospitality property, is Boston's most inspiring backdrop for hosting an unforgettable event—from a weekday company outing to an elegant, milestone celebration. Guests will enjoy complete privacy of our historic 1902 Arts and Crafts fieldstone mansion, lavish grounds, and whimsical gardens.



PHOTO: ARTEFACT IMAGES, OPPOSITE: BHARAT PARMAR PHOTOGRAPHY



*Modern Amenities in a*

## HISTORICAL SETTING

We take pride in the authentic craftsmanship demonstrated throughout our estate. Laden with inspiration from the Medieval Period as well as the Arts and Crafts-style, Willowdale Estate is an architecturally unique, warm, and welcoming home.

Our mansion features many original details, including the red slate roof, leaded stained glass windows, stone fireplaces, images of Knights, Kings and Queens, and intricate wood moldings.





MARK SPOONER PHOTOGRAPHY



MARK SPOONER PHOTOGRAPHY



ZEY FISHER PHOTOGRAPHY



CATHERINE TRELL PHOTOGRAPHY



ZEY FISHER PHOTOGRAPHY



MARK SPOONER PHOTOGRAPHY



CHRISTIAN PLEVA PHOTOGRAPHY



MARK SPOONER PHOTOGRAPHY



LEONA CAMPBELL PHOTOGRAPHY



CATHERINE THREKELD PHOTOGRAPHY



PHIL FOX PHOTOGRAPHY



ALICIA PETITI PHOTOGRAPHY



PHOTO: SHANNON DODD PHOTOGRAPHY, OPPOSITE: JENNIFER BAKOS PHOTOGRAPHY

# CAREFULLY CRAFTED

*and Catered Occasions*

In the highest traditions of understated, yet impeccable, hospitality, every detail is taken into account by our career professionals who pride themselves on flawless execution of each and every event.

Our Executive Chef leads an expert culinary team, expressing the rich history and character of the estate through flavorful menus including fresh fruit, vegetables, line-caught fish, and local poultry and beef.

Ease your mind with one of our refined yet approachable menus, or work with our team to design your own.



# EVENT OFFERINGS

*(suggested but not limited to)*

## MEETINGS

Breakfast and Lunch Meetings

Annual Kickoffs

Quarterly Meetings

Executive Think Tanks

Product Launches

Team Retreats

Award Banquets

Client Appreciation Events

## SUMMER OUTINGS

Team Building

Backyard BBQ

Lawn Games

Hiking

New England Clambake and Grill

Ipswich River Canoeing or Kayaking

Local Craft Beer Tasting

## CELEBRATIONS & RECOGNITIONS

Holidays

Milestone Birthdays

Baby/Bridal Showers

Graduations

Anniversaries

Retirements

Memorials

Family Reunions

Fundraisers





ZEV FISHER PHOTOGRAPHY



LEATHER NICOLE PHOTOGRAPHY



EMILY TRESA PHOTOGRAPHY



# GREAT ROOM

The Great Room at Willowdale Estate features cathedral ceilings with exposed beams, an ornate orchestra balcony, an etched stone fireplace, and large-scale built-in shelving. The open floor plan is perfect for a variety of event layouts and can be used with the adjacent Dining Room or Conservatory.

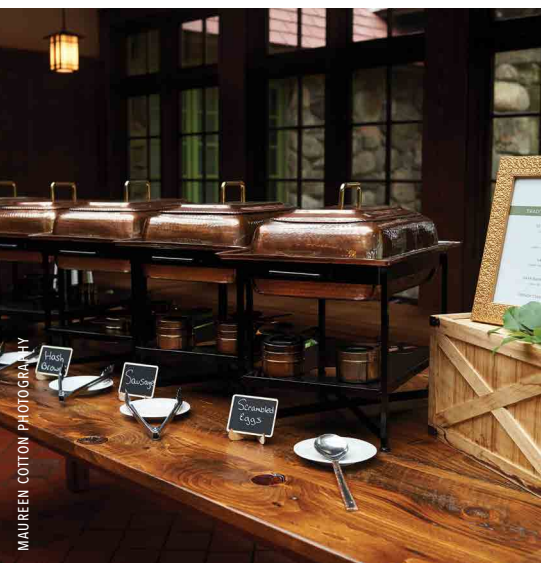


THIS PHOTO & OPPOSITE: SHANE GODFREY PHOTOGRAPHY

SQUARE FEET	DIMENSIONS	LOCATION
690 SF	23' X 30'	FIRST FLOOR
U-SHAPE	CONFERENCE	THEATER
31 GUESTS	64 GUESTS	90 GUESTS
CLASSROOM	HOLLOW SQUARE	BANQUET
50 GUESTS	42 GUESTS	48 GUESTS



MARK SPOONER PHOTOGRAPHY



MAUREEN COTTON PHOTOGRAPHY



DAN AGUIRRE PHOTOGRAPHY



# CONSERVATORY

The Conservatory features a panoramic view of the property and ample natural light. Two walls of oversized windows face out towards our forested surroundings, and a symmetrical sky-lit ceiling make this room ideal for daytime events and meetings year-round. The warm tiled flooring and exposed fieldstone in this room also pay homage to our historic background, while retaining all of the comforts of a modern event space.

## SQUARE FEET

756 SF

## DIMENSIONS

27' X 28'

## LOCATION

FIRST FLOOR

## U-SHAPE

31 GUESTS

## CONFERENCE

48 GUESTS

## THEATER

98 GUESTS

## CLASSROOM

40 GUESTS

## HOLLOW SQUARE

42 GUESTS

## BANQUET

56 GUESTS



PHOTO: GRAPHIC ACCENT, OPPOSITE: NED JACKSON PHOTOGRAPHY



# DINING ROOM

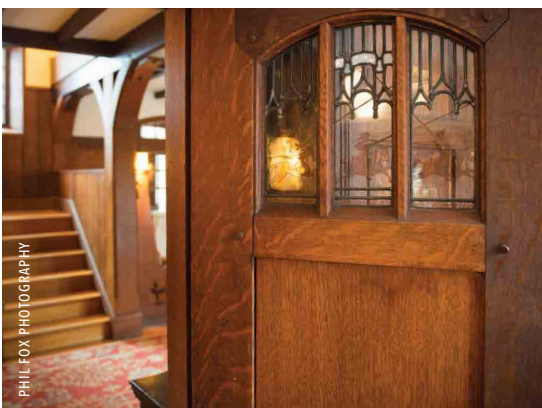
The Dining Room is full of artistic details and handcrafted elements. The black and white floor pattern, vaulted ceilings with exposed beams, and easy access to our kitchen and restrooms make this room an ideal location for a private lunch or meeting. Details in this room include an ornate Italian Marble Fireplace with imported Delft tiles and beautiful windows with etched glass. Not only does this room have a beautiful view of the Garden Courtyard, but it also provides direct access to the Tent and Garden, which are often used in conjunction with events under our tent.



SQUARE FEET	DIMENSIONS	LOCATION
578 SF	13' X 34'	FIRST FLOOR
U-SHAPE	CONFERENCE	THEATER
26 GUESTS	32 GUESTS	56 GUESTS
CLASSROOM	HOLLOW SQUARE	BANQUET
40 GUESTS	36 GUESTS	32 GUESTS



*Our historic property defines understated elegance,  
an authentic country manor designed to stir  
imagination and inspire conversations.*



PHIL FOX PHOTOGRAPHY



PATRICK MACNAMARA PHOTOGRAPHY



B. WISE PHOTOGRAPHY



SHANE GODFREY PHOTOGRAPHY

# PARLOR

The Parlor at Willowdale Estate is adjacent to the main hallway, and leads into the North Wing and Library. Pocket doors with beautiful woodwork and a hand-crafted door with stained glass can be closed to create a private space. This room can also be used with the rest of the North Wing and Library for larger events.

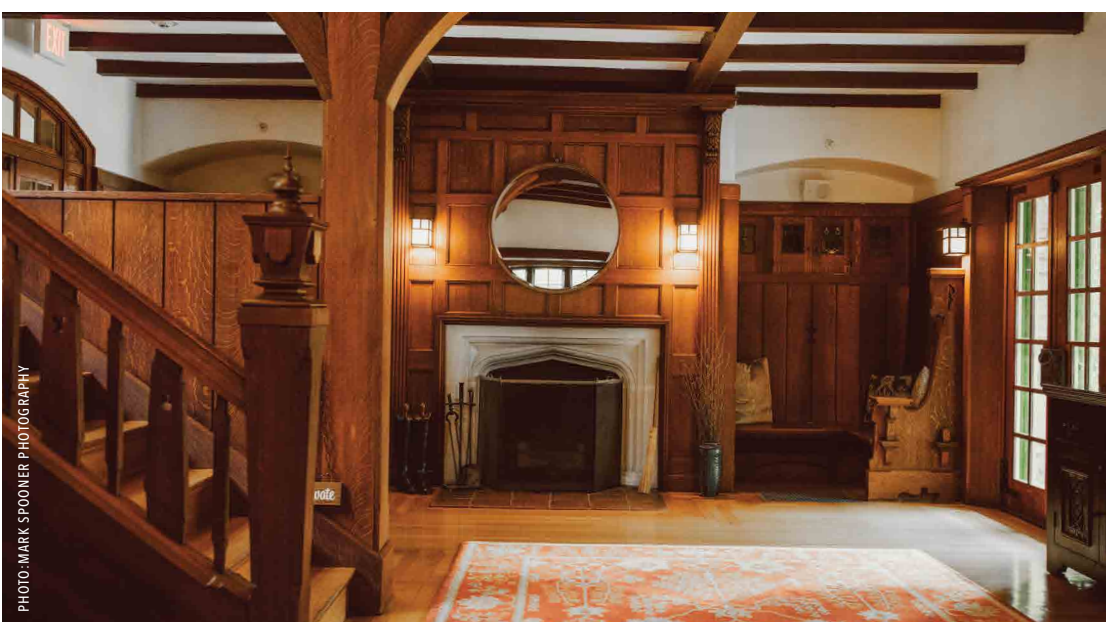


PHOTO-MARK SPOONER PHOTOGRAPHY

SQUARE FEET	DIMENSIONS	LOCATION
342 SF	18' X 19'	FIRST FLOOR
U-SHAPE	CONFERENCE	THEATER
20 GUESTS	24 GUESTS	40 GUESTS
CLASSROOM	HOLLOW SQUARE	BANQUET
16 GUESTS	24 GUESTS	32 GUESTS



SHANE GODFREY PHOTOGRAPHY



ZEV FISHER PHOTOGRAPHY



SHANE GODFREY PHOTOGRAPHY

# LIBRARY

Decorative, handcrafted double doors lead into the Library at Willowdale Estate from the North Wing of the house. This cozy room has a beautiful view of our Garden Courtyard and doors that lead out to the Pergola and Tent. This is the perfect room for intimate meetings, dinners, collaboration, or relaxation!



OPPOSITE: SHANE GODFREY PHOTOGRAPHY

SQUARE FEET	DIMENSIONS	LOCATION
324 SF	18' X 18'	FIRST FLOOR
U-SHAPE	CONFERENCE	THEATER
17 GUESTS	24 GUESTS	32 GUESTS
CLASSROOM	HOLLOW SQUARE	BANQUET
14 GUESTS	22 GUESTS	18 GUESTS



# THE SUITES

Three hospitality suites are located on the second floor of Willowdale Estate. Each room has plenty of comfortable seating and convenient ensuite bathrooms. They also offer a private location for preparation, meetings, or break-out space with views of the surrounding forest, gardens, and courtyard.

## WEDDING SUITE (top right)

SQUARE FEET	DIMENSIONS	U-SHAPE	CONFERENCE	THEATER	CLASSROOM	HOLLOW SQ	BANQUET
323 SF	19' X 17'	N/A	22	40	24	28	32

## PALMER LOUNGE (top left)

SQUARE FEET	DIMENSIONS	U-SHAPE	CONFERENCE	THEATER	CLASSROOM	HOLLOW SQ	BANQUET
370 SF	18' X 15'	22	12	28	8	N/A	16

## EQUESTRIAN LOUNGE (bottom left)

SQUARE FEET	DIMENSIONS	U-SHAPE	CONFERENCE	THEATER	CLASSROOM	HOLLOW SQ	BANQUET
234 SF	13' X 18'	16	20	27	10	22	20





HEATHER NUGENT PHOTOGRAPHY



JAN MARIE SWIFT PHOTOGRAPHY



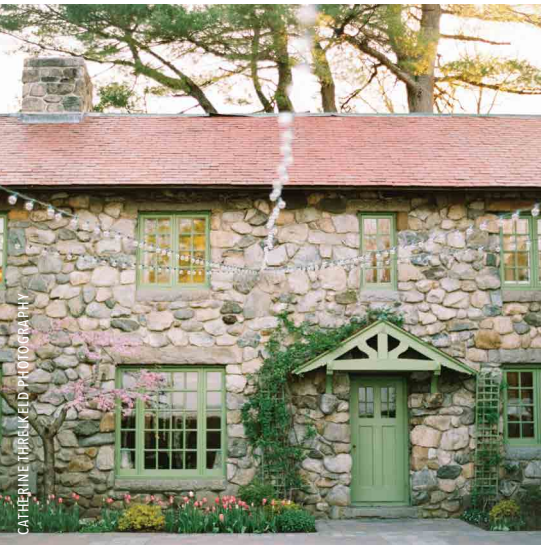
MARK SPOONER PHOTOGRAPHY



MAUREEN CATTION PHOTOGRAPHY



MARK SPOONER PHOTOGRAPHY



CATHERINE WHEELER PHOTOGRAPHY

# TENT & COURTYARD

Our custom, handcrafted Sperry tent features a breathable canvas fabric, spruce center poles with globe lanterns, beaded lights around the perimeter of the tent for lighting, clear floor-length tent sides, heaters and fans, smooth concrete flooring, and electrical outlets. The tent is connected to the Estate with a custom framed tented walkway, which leads into the Dining Room and also opens into the Garden Courtyard. Our 40' x 40' Garden Courtyard is surrounded by three exterior fieldstone walls and features a vast variety of flowering plants and trees, as well as, multiple access points to the manion and tent.

SQUARE FEET	DIMENSIONS	CAPACITY
3,200 SF	80' X 40'	240 GUESTS

*layouts are subject to event needs*

# FIRST FLOOR

## 1. LIBRARY (18'X18')

Decorative handcrafted double doors lead into the Library. This cozy room has a beautiful view of our Garden Courtyard and doors that lead out to the Pergola and Tent.

## 2. PARLOR (18'X19')

The space features pocket doors with beautiful woodwork and a hand crafted door with stained glass that leads to the main hallway of the house.

## 3. SPERRY TENT (80'X40')

Features a breathable canvas fabric, spruce center poles, six globe lanterns and beaded lights around the perimeter of the tent for lighting, clear floor-length tent sides, heaters and fans, smooth concrete flooring and electrical outlets.

## 4. GARDEN COURTYARD (40'X40')

Surrounded by three exterior fieldstone walls and features a vast variety of flowering plants and trees.

## 5. DINING ROOM (13'X34')

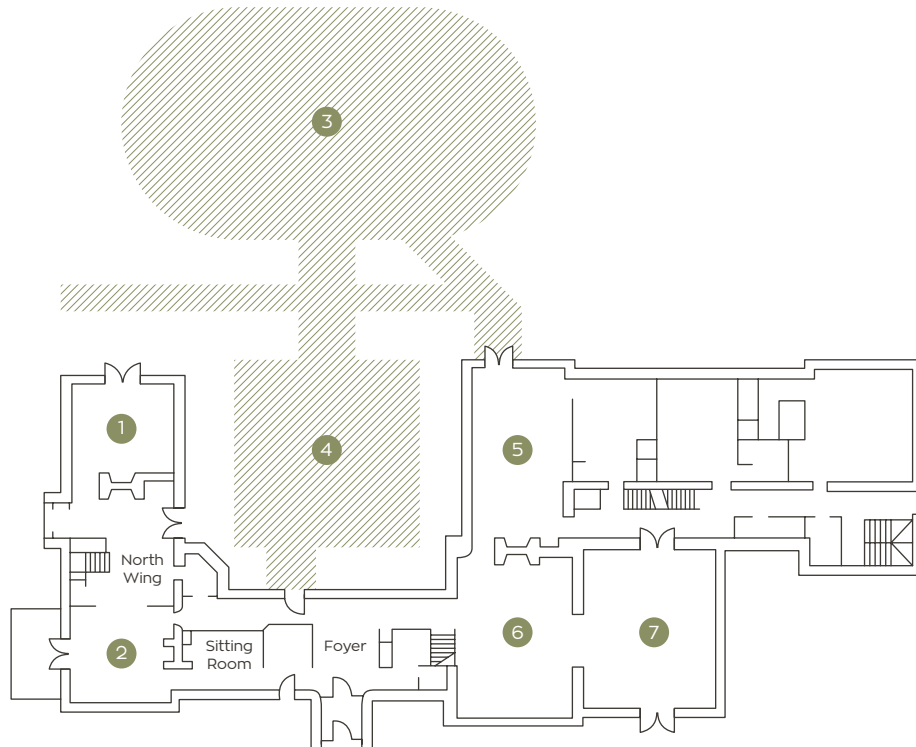
Full of artistic detail and handcrafted elements such as a black and white floor pattern and vaulted ceilings with exposed beams.

## 6. GREAT ROOM (23'X30')

Features cathedral ceiling with exposed beams, ornate balcony, etched stone fireplace and large scale built-in shelving.

## 7. CONSERVATORY (27'X28')

Features a panoramic view of the property, ample natural light, two walls of oversized windows facing out towards our forested surroundings, and a symmetrical sky-lit ceiling.



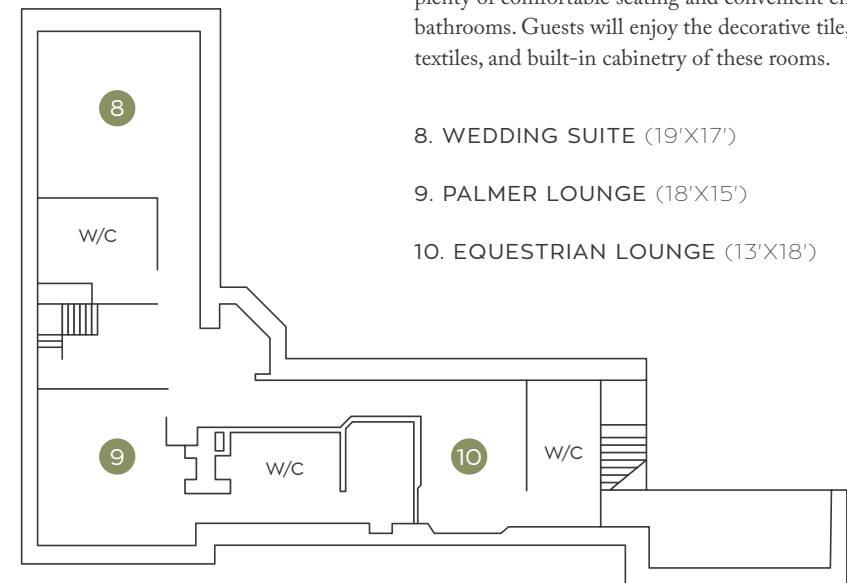
# SECOND FLOOR

Three hospitality suites are located upstairs, each with plenty of comfortable seating and convenient en-suite bathrooms. Guests will enjoy the decorative tile, rich textiles, and built-in cabinetry of these rooms.

## 8. WEDDING SUITE (19'X17')

## 9. PALMER LOUNGE (18'X15')

## 10. EQUESTRIAN LOUNGE (13'X18')

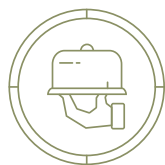


*Social & Corporate Event*

# FEATURES

---

Our event packages will provide you with the location, equipment and services necessary for a wonderful experience from start to finish. We are proud to offer the following capabilities for your next event:



RESTAURANT  
QUALITY CATERING



FULL SERVICE  
BAR PROGRAM



EVENT  
COORDINATION



PLACE SETTINGS, TABLES,  
CHAIRS & LINENS  
*With options to customize*



AV EQUIPMENT  
*Coordination and setup of  
AV or presentation equipment*



EVENT ENHANCEMENTS  
*Lawn games, design packages,  
fire pits and more*

